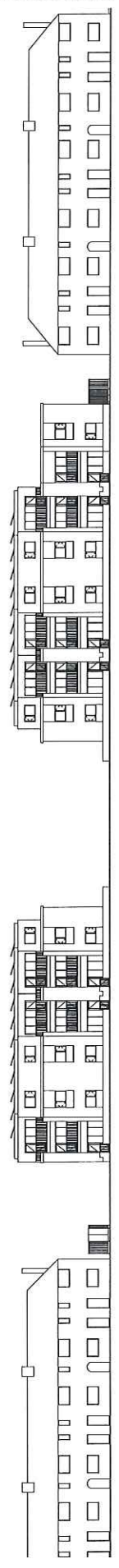
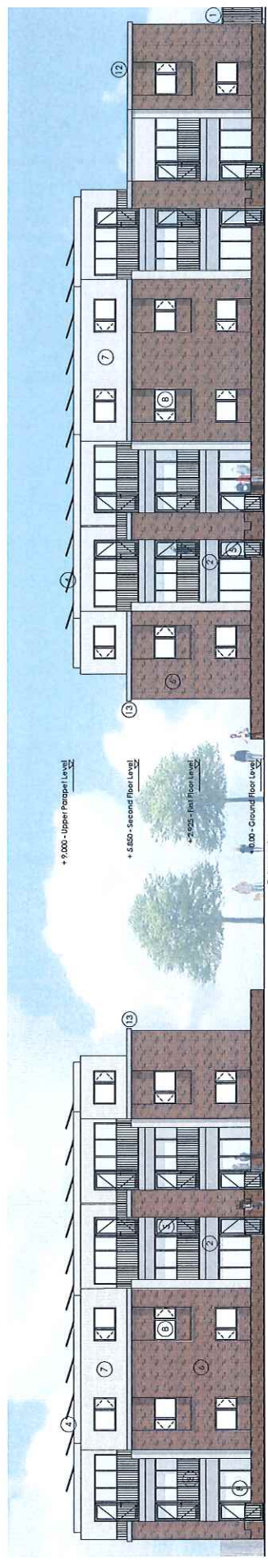


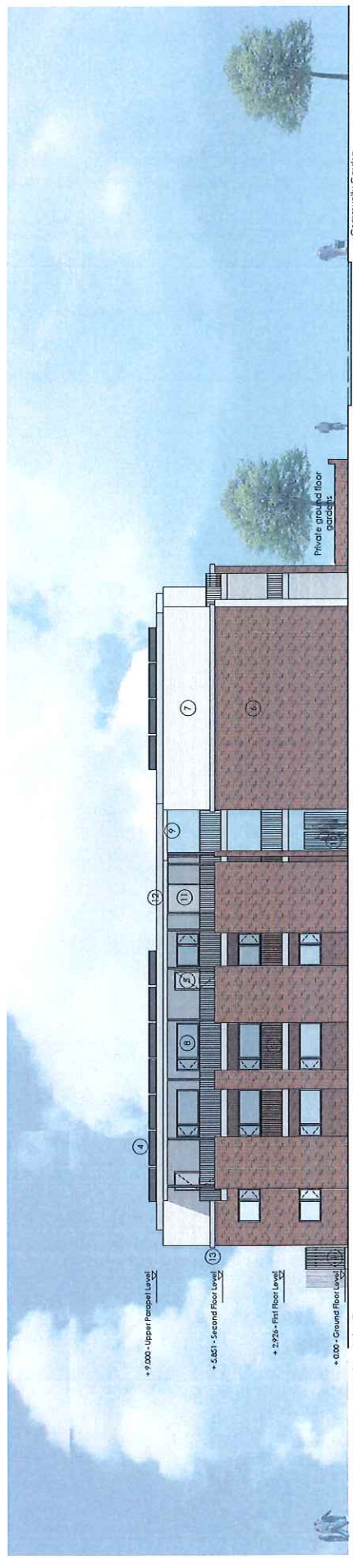
- 1 Chew bonded metal
- 2 Polished galvanized steel panel
- 3 Coloured enamel
- 4 Indistinct color of (Pewter/Black and green) oil
- 5 Composite double glazed door
- 6 Imitation of (Wenge/Black Walnut)
- 7 Imitation of (Wenge/Black Walnut)
- 8 Composite double glazed window
- 9 Anodized grey
- 10 Concrete floor (interior)
- 11 Coloured steel (double glazing)
- 12 Glass and metal colored enamel board finishing (interior) Green - Alum
- 13 Wet floor roof
- 14 Precast concrete coping stone



1 Proposed West Elevation
1:200



2 Proposed West Elevation
1:100



3 Proposed North Elevation (Block A)
1:100

PROJECT	DATE	SCALE
PLANNING		
The above is a preliminary drawing and should not be used for construction purposes without the approval of the relevant authorities.		
Block Hemming Way Harford Community Housing Trust Proposed West and North Elevations		
DATE	BY	SCALE
05/11/2015	PL	200